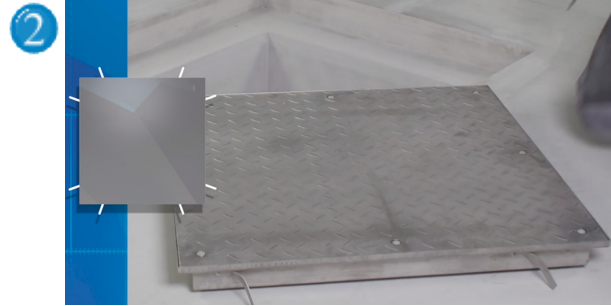


Installation instruction floor access cover Type PRO+ TR

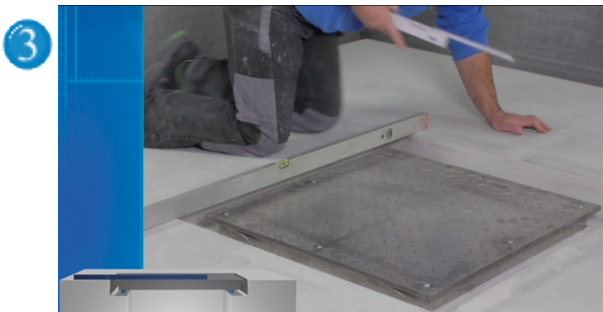
ProfessionalLine+



1 Check if the delivery is complete. (4 lifting keys, screws and cover caps, traverse for covers for heavy load)



2 Bend the anchor lugs so that a solid fastening in the concrete is assured.



3 Place the closed cover and frame in the opening of the floor and adjust the top side of the cover to the level of the floor finishing. The recommended circumferential rebate for the concrete is minimally 100 mm.
Caution: Only install cover when closed!



4 Embed the access cover completely or up to the lower edge of the floor finish in concrete at all four sides of the frame. Protect the screws and edges from concrete splashes.
Let the concrete cure completely. As soon as the frame has a fix connection to the concrete, the frame can not shift.

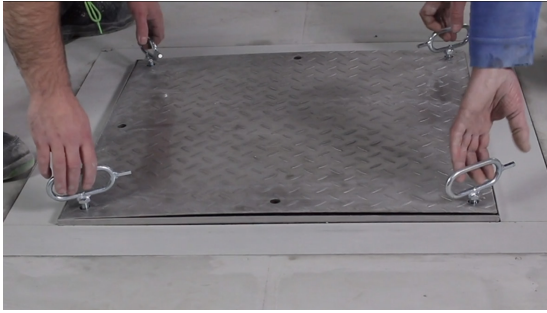


5 When the concrete has achieved 80 % of its rigidity, clean the visible surfaces of the cover.

Installation instruction floor access cover Type PRO+ TR

ProfessionalLine+

6



When the concrete has cured completely, remove the covering caps and screws. Screw the lifting keys into the thread in the lifting points. Remove the cover from the frame.

7



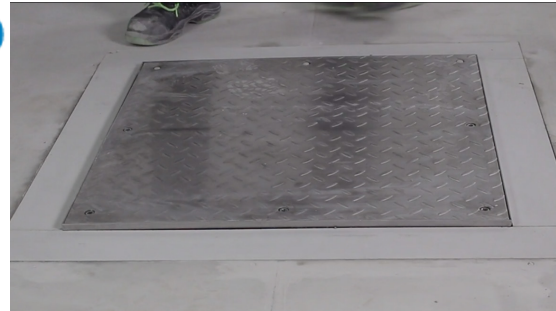
Now you can clean the rest of the floor access cover.

8



When the cover is for heavy load, screw two lifting keys into the thread in the traverse and place the traverse in the frame.

9



Check the operation, replace the cover, screw in the securing bolts and fix the covering caps.